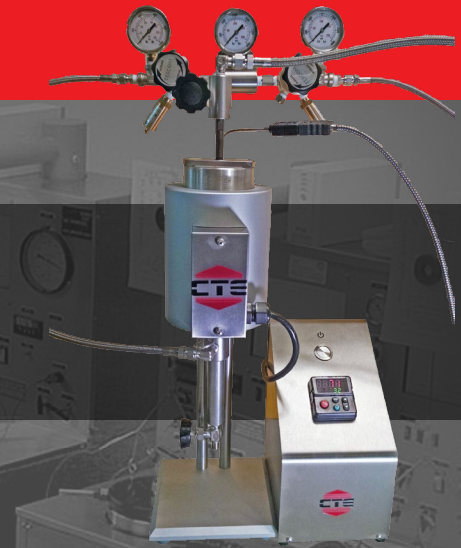


CTE MODEL 622-175-115/230 STATIC FLUID LOSS/FILTER PRESS



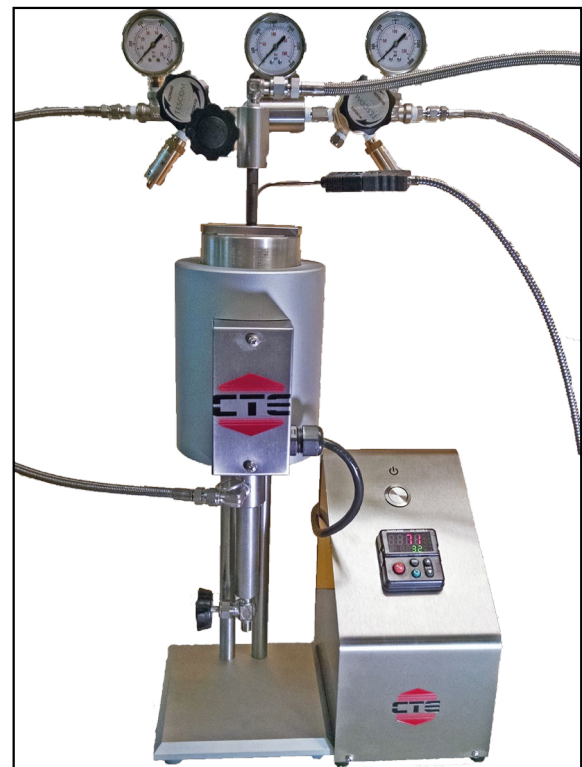
*M800 GAS MANIFOLD SOLD SEPERATELY

MODEL 622-175 STATIC FLUID LOSS

The CTE Model 622-175 Static Fluid Loss Tester is capable of performing tests up to 2,500 psi (17.2 MPa) and 500 °F (260 C). The test cell can hold up to 175mL of slurry sample. The test cell is a double-ended, screw-in cap design that uses stem valves to open and close the pressure ports at both ends. Standard 325 mesh screens, spares and accessories including: multi-wrench, O-rings, filtrate receiver and temperature controller are supplied with the instrument.

The stainless steel cabinet construction ensures long life durability. Precise temperature control with easy-to-use, set-point, controller and thermocouple. The filtrate receiver is used to supply compressed gas when needed to prevent fluid boil-off at high test temperatures. M800 direct to bottle, dual nitrogen manifold sold separately and is capable of independently supplying pressure to the cell and filtrate receiver.

- Conforms to API Spec. 10, Spec. 13, ISO 10426.
- Quality construction - made in the USA.
- Safe working environment - residual pressure is automatically released when attempting to open cell.



SPECIFICATIONS

ELECTRICAL

Input Voltage	230 VAC (±10%) 115 VAC
Input Power (400W)	230 - 7A 115 - 3.5A

DIMENSIONS

Height	17 in. (43 cm)
Width	6 in. (15 cm)
Depth	6 in. (15 cm)
Weight	27 lbs. (12 kg)

WARRANTY

All CTE products are covered by a full one-year warranty against defect in materials and workmanship. A sales terms, conditions, and warranty statement is located on our website www.ctetulsa.com/support.



CEMENT TEST EQUIPMENT, INC.

+1 (918) 835-4454 info@ctetulsa.com
www.ctetulsa.com