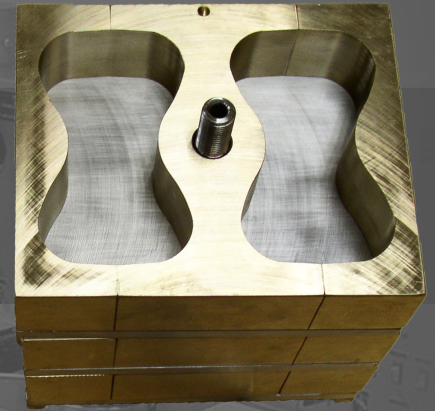
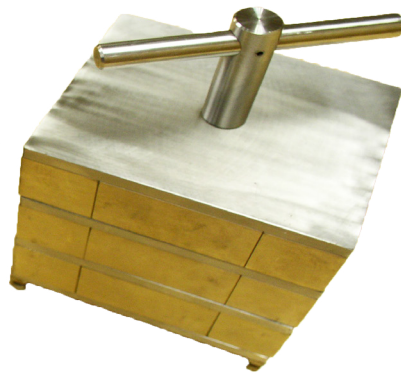


CTE TENSILE STRENGTH BRIQUETTE MOLDS



TENSILE STRENGTH BRIQUETTE MOLDS

Cement Test Equipment tensile strength briquette molds are made in accordance to ASTM specification C307. The molds may be used in pressurized or non-pressurized curing chambers or baths. The cube molds are cast and machined from high quality brass in the USA. Non-corrosive, stainless steel bolts, plates, center tubes, and handles are ultra durable and will last a very long time with proper handling and maintenance. Each stack of molds produces two briquette specimens. Each stack contains 2 outer and 1 inner parts which can be disassembled after a test, cleaned and then reassembled. Thin grooves are milled onto one side of the separation plates to allow fluid pressure penetration into the cement sample. The mold sets are designed to stand up and placed using the supplied T-handle. An optional stainless steel bucket is available for water/oil separation testing requirements.



SPECIFICATIONS

Part #	Specimen Qty	Weight	Dimensions Length x Width	Dimensions Height with Handle/ Without
05-0080-1	2	3.6 lbs	4.4" x 3.75"	4"/2"
05-0080-2	4	7.1 lbs	4.4" x 3.75"	5.2"/3.2"
05-0080	6	10.6 lbs	4.4" x 3.75"	6.4"/4.4"
05-0080-3	8	14.1 lbs	4.4" x 3.75"	7.6"/5.6"



CEMENT TEST EQUIPMENT, INC.

+1 (918) 835-4454 info@ctetulsa.com
www.ctetulsa.com

WARRANTY

All CTE products are covered by a full one-year warranty against defect in materials and workmanship. A sales terms, conditions, and warranty statement is provided on our website.